

2019 Clark Nexsen - Second Annual Ideas Competition

21st century urban high school
learning institution as community resource



Competition Brief

Introduction:

As populations in urban centers continue to grow, finding ways in which buildings can accommodate multiple uses seems a likely enticement for municipalities and in keeping with sustainably oriented development. With the rise in concern over school safety, education facilities are responding more and more by hardening their perimeter consequently creating a barrier to the communities they serve. This can be problematic as schools become increasingly isolated leading them to be more reminiscent of detention facilities.

This competition asks participants to discover ways in which schools can open outward and welcome community engagement in safe and imaginative ways. Teams comprised of members from participating offices are challenged to design a new (~70,000gsf) urban high school in downtown Greensboro, North Carolina. One team per office location is encouraged, however if considerable interest emerges a second team may form. In addition to the specific program requirements listed in the brief please note participants are required to incorporate a multi-use space(s) for students and faculty that can be shared with the neighborhood population. The programmatic characteristics and uses of this space(s) are left to each team to decide. Additionally, each proposal shall include a minimum of 5 residences to accommodate new teachers and their families whose annual household income falls below \$65,000.

Objective:

- Participants are asked to design a multi-use urban high school that incorporates teacher housing, amenity(s) space shared between the community and the school that accommodates curricular needs.
- In doing so participants are encouraged to :
 - Challenge current thoughts in high school design
 - Investigate community integration through the multi-use strategies
 - Are there potential linkages yet untapped between schools and neighborhoods like shelters, community centers, churches, adult education centers, child care...
 - What design strategies can be implemented to ensure a safe education environment while allowing for neighborhood access and permeability



Competition Brief

Schedule:

Kick Off - June 14

Q and A Ends - June 21

Submissions Due - July 26

Jury Deliberations - July 26 - August 23

Winners Announced - August 26

Deliverables:

Max 1 - 30x42 board

Left to the discretion of the entrant but it is encouraged to include:

Plans

Sections

Elevations

3D Renderings

Any additional diagrams, photographs of models included on boards, sketches, drawings and information the entrant needs to accurately convey their proposal

100 word design statement - included on presentation board

Written description max 500 words - separate word file

Typical single day facility schedule (24 hours) - separate word file

Jury:

To be determined

Resources:

Microsoft Teams Group “21st Century Urban High School” [CLICK HERE](#)



Competition Brief

Base Program:

General Purpose -	English-	1	700
		1	700
		1	700
		1	700
	- Foreign Language-	1	700
		1	700
		1	700
	- Social Studies-	1	700
		1	700
		1	700
	- Mathematics-	1	700
		1	700
		1	700
		1	700
	- -	-	Total 9800
Science Classrooms -	Physics -	1	800
	Biology -	1	900
	Chemistry -	1	900
	Storage Prep Rooms -	1	250
	- -	-	Total 2850
Small Group Resources Rooms -	Tutoring Room -	3	240
	Collaboration Rooms -	4	1500
	- -	-	Total 1740
Arts Education - Visual Arts -	Art Room -	1	850
	Kiln/Clay Storage -	1	60
	Art Material Storage -	1	140
	Illustration Class -	1	750
	- -	-	Total 1800
Arts Education - Music -	Theater Arts Room/Dance/Drama -	1	1000
	Stage, Storage, and Dressing -	1	500
	Gen Storage -	1	150
	Music Space -	1	900
	- -	-	Total 2550
Media Center -	Main Room (RLV) -	1	1000
	Computer Science Classroom -	1	800
	Media Office/Admin -	1	180
	Professional Area -	1	200
	Equipment Storage/Distribution -	1	100
	- -	-	Total 2280
Technology Infrastructure -	Dining Room Seating Area -	1	3000
	Serving -	1	300
	Kitchen -	1	400
	- -	-	Total 3700

Physical Education -	Main Gym -	1	10500
	- PE-Boys Locker Rooms -	1	600
	- Boys Shower/Toilets -	1	500
	- PE-Girls Locker Rooms -	1	600
	- Girls Shower/Toilets -	1	500
	- Men's Coach Office/Toilet/Shower -	1	250
	- AD Office -	1	120
	- Women's Coach Office/Toilet/Shower -	1	250
	- Conf/Film Rm/Health PE Classroom -	1	700
	- Training -	1	100
	- Equipment Storage -	1	750
	- Lobby/Concessions/Commons -	1	500
	- Resistive Exercise (Weight Room) -	1	1000
	- -	-	Total 16370

Administration -	Head -	1	250
	- Upper School Principal -	1	150
	- Dean of Students -	1	150
	- Reception Area -	1	500
	- Admin Assistant -	1	150
	- SRO -	1	80
	- Health/Nurse -	1	200
	- Health Tlt -	1	70
	- Workroom/Storage -	1	280
	- Conference Room -	1	400
	- Record Storage -	1	180
	- Registrar -	1	120
	- Bookkeeping -	1	120
	- CFO -	1	150
	- Admissions -	1	200
	- -	-	Total 3000

Guidance/Student Support -	Reception/Info Center -	1	700
	- Counselor Office -	1	150
	- -	1	150
	- -	-	Total 1000

Staff Support -	Group Teacher Office/Planning -	1	225
	- Teacher Planning/Work Area -	1	500
	- School Counselor -	1	180
	- Teacher Work Area/Floating Offices -	1	350
	- -	-	Total 1255

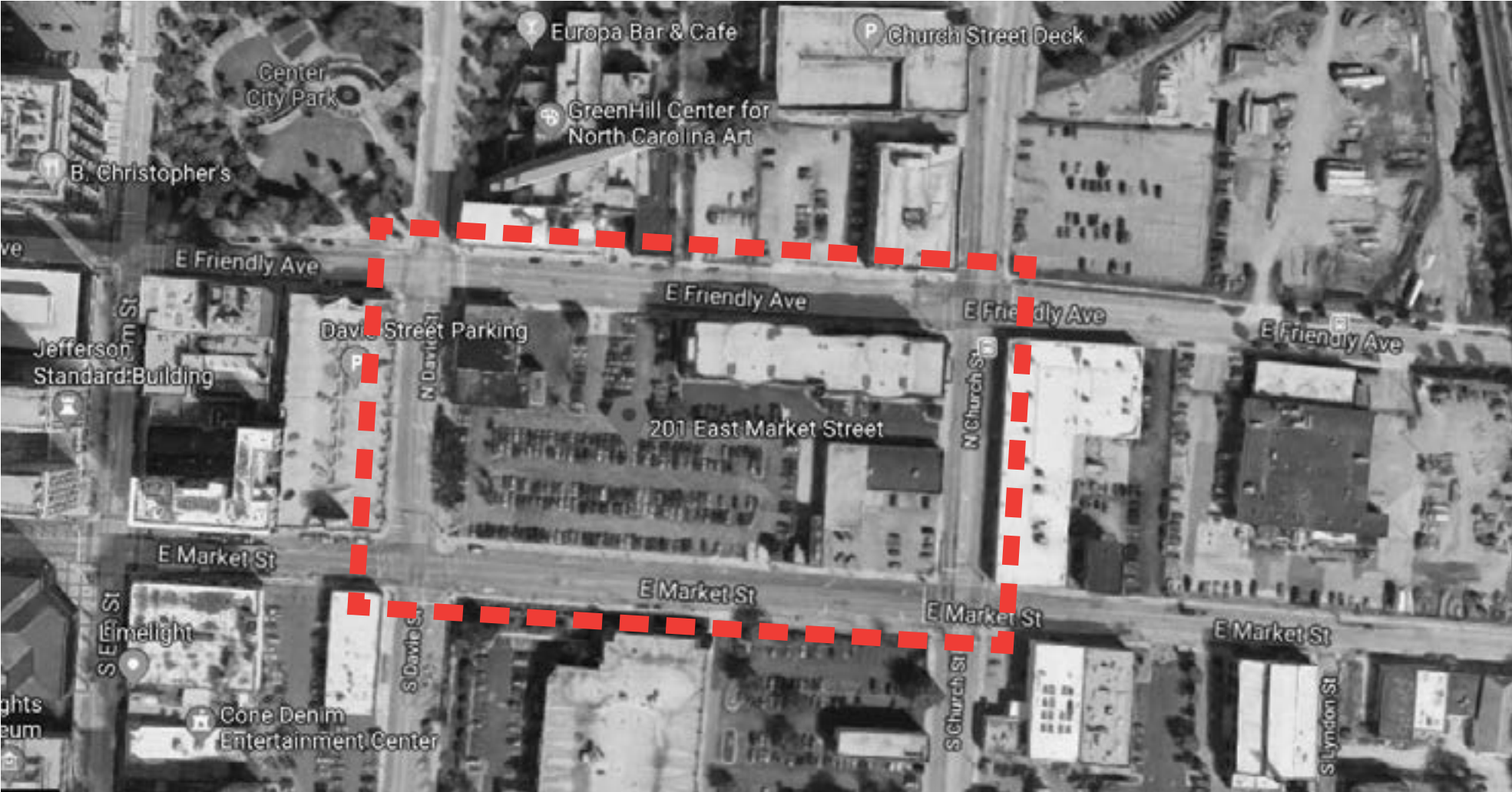
Building Support -	Maintenance Staff Office -	1	240
	- -	-	Total 240

Total Net SF=	46,585
Efficiency Ratio @ 0.70 =	9,965
Total Gross SF=	66,550

Competition Brief

Site:

201 East Market Street
Greensboro, NC 27401



Demolition of the existing construction on the site is at the discretion of the team.

